



“my
Reference,”

CREATION 55

Gerflor[®]
theflooringgroup

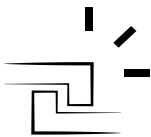
55 | CREATION BOOK

CREATION 55 GLUE DOWN



PERMANENT ADHESIVE
COLLAGE PERMANENT
VOLLFLÄCHIGE
VERKLEBUNG

CREATION 55 CLIC



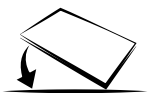
INTERLOCKING
CLIPSABLE
KLICKSYSTEM



PATENTED

5X MORE RESISTANT 30% FASTER

CREATION 55 LOOSELAY



LOOSELAY - REMOVABLE
PLOMBANT-
REPOSITIONNABLE
LOSE VERLEGUNG-
WIEDERAUFNEHMBAR

DESIGN SHADE VARIATION /
NIVEAU DE CONTRASTE DU DÉCOR /
KONTRASTSTÄRKE DES DESIGNS



LIGHT / LÉGER / GERING



MEDIUM / MOYEN / MITTEL



HIGH / FORT / HOCH

COLOR DESIGN	CODE	CREATION 55	CREATION 55 CLIC	CREATION 55 LOOSELAY	SKIRTINGS / PLINTHES / SOCKELLEISTEN (MATCHING DESIGNS)	PAGE
AMADOR	0447	■	■	■	S004	07
ARENA	0060	■	■	■	S026	11
BALLERINA	0347	■	■	■	S008	22
CARMEL	0618	■	■	■	S020	38
HONEY OAK	0441	■	■	■	S033	17
LONG BOARD	0455	■	■	■	S034	16
MALUA BAY	0448	■	■	■	S035	12
NORVEGIAN STONE	0860	■	■	■	S042	36
PARKER STATION	0374	■	■	■	S047	35
RANCH	0456	■	■	■	S053	06
SWISS OAK GOLDEN	0796	■	■	■	S015	03
SWISS OAK PEARL	0846	■	■	■	S014	03
TWIST	0504	■	■	■	S039	15
AMARANTE	0579	■	■	■	S005	24
ASPEN	0458	■	■	■	S006	30
BLOOM GREY	0867	■	■	■	S069	41
BLOOM TAUPE	0866	■	■	■	S070	41
BLOOM UNI GREY	0869	■	■	■	S071	41
BLOOM UNI TAUPE	0868	■	■	■	S072	41
BOSTONIAN OAK	0871	■	■	■	S016	04
BOSTONIAN OAK BEIGE	0853	■	■	■	S017	04
BOSTONIAN OAK GREY	0855	■	■	■	S018	04
BOSTONIAN OAK HONEY	0851	■	■	■	S019	04
BROWNIE	0459	■	■	■	S073	28
BUFFALO	0457	■	■	■	S075	29
CAMBRIDGE	0465	■	■	■	S065	21
CARRARE	0744	■	■	■	S021	42
CEDAR BROWN	0850	■	■	■	S024	18
CEDAR PURE	0849	■	■	■	S025	18
DURANGO TAUPE	0751	■	■	■	S027	32
ERAMOSIA BEIGE	0863	■	■	■	S028	43
MICHIGAN	0461	■	■	■	S038	27
OXFORD	0061	■	■	■	S043	08
PAINT WOOD TAUPE	0856	■	■	■	S046	14
QUARTET	0503	■	■	■	S056	23
QUARTET FAUVE	0859	■	■	■	S057	23
REGGIA IVORY	0861	■	■	■	S054	37
RIVERSIDE	0436	■	■	■	S032	39
RUST CORTEN	0095	■	■	■	S044	31
RUSTIC OAK	0445	■	■	■	S062	25
SILVER CITY	0373	■	■	■	S048	34
STACCATO	0476	■	■	■	S064	33
STRIPED OAK HONEY	0857	■	■	■	S010	26
STRIPED OAK ICE	0858	■	■	■	S009	26
SWISS OAK BEIGE	0848	■	■	■	S011	03
SWISS OAK CASHMERE	0795	■	■	■	S012	03
SWISS OAK SMOKED	0847	■	■	■	S013	03
WHITE LIME	0584	■	■	■	S074	13
PONTO CRUZ CITY	0878	■	■	■	S052	40
PONTO CRUZ NAVY	0876	■	■	■	S051	40
CHEVRON BUCKWHEAT	0811	■	■	■	S029	09
CHEVRON HURRICANE	0809	■	■	■	S030	09
CHEVRON MOKA	0810	■	■	■	S031	09
MANSFIELD LIGHT	0068	■	■	■	S036	10
MANSFIELD NATURAL	0069	■	■	■	S037	10
NORTHWOOD MACCHIATO	0816	■	■	■	S040	19
NORTHWOOD MOKACCINO	0817	■	■	■	S041	19
QUARTET HONEY	0870	■	■	■	S058	23
REGGIA TAUPE	0862	■	■	■	S055	37
ROYAL OAK BLOND	0812	■	■	■	S060	20
ROYAL OAK COFFEE	0740	■	■	■	S061	20
RUST METAL	0094	■	■	■	S045	31
VINTAGE OAK	0426	■	■	■	S063	05

■ : Available / Disponible / Verfügbar

LRV/LVR on gerflor.com

SWISS OAK



SWISS OAK GOLDEN
0796



184 x 1219
230 x 1500



214 x 1239
242 x 1461



229 x 1220



SWISS OAK BEIGE
0848



184 x 1219
230 x 1500
152 x 762



214 x 1239
242 x 1461



SWISS OAK CASHMERE
0795



184 x 1219
230 x 1500



214 x 1239
242 x 1461



SWISS OAK PEARL
0846



184 x 1219
230 x 1500



214 x 1239
242 x 1461



229 x 1220



SWISS OAK SMOKED
0847



184 x 1219
230 x 1500



214 x 1239
242 x 1461

BOSTONIAN OAK



BOSTONIAN OAK HONEY
0851



184 x 1219
230 x 1500



214 x 1239
242 x 1461



BOSTONIAN OAK
0871



184 x 1219



214 x 1239



BOSTONIAN OAK BEIGE
0853



184 x 1219
230 x 1500



214 x 1239
242 x 1461



BOSTONIAN OAK GREY
0855



184 x 1219
230 x 1500



214 x 1239
242 x 1461

VINTAGE OAK



VINTAGE OAK
0426



184 x 1219



RANCH



184 x 1219
230 x 1500



214 x 1239
242 x 1461



229 x 1220

RANCH
0456



AMADOR



184 x 1219



214 x 1239



229 x 1220

AMADOR
0447



OXFORD



184 x 1219



214 x 1239

OXFORD
0061



CHEVRON



CHEVRON MOKA
0810



184 x 1219



CHEVRON BUCKWHEAT
0811



184 x 1219



CHEVRON HURRICANE
0809



184 x 1219

MANSFIELD



MANSFIELD LIGHT
0068



184 x 1219



MANSFIELD NATURAL
0069



184 x 1219

ARENA



184 x 1219



214 x 1239



229 x 1220

ARENA
0060



MALUA BAY



MALUA BAY
0448



184 x 1219



214 x 1239



229 x 1220



WHITE LIME



184 x 1219



214 x 1239

WHITE LIME
0584



PAINT WOOD TAUPE



184 x 1219



214 x 1239

PAINT WOOD TAUPE
0856



TWIST



184 x 1219



214 x 1239



229 x 1220

TWIST
0504



LONGBOARD



184 x 1219



214 x 1239



229 x 1220

LONGBOARD
0455



HONEY OAK



184 x 1219



214 x 1239



229 x 1220

HONEY OAK
0441



CEDAR



230 x 1500



242 x 1461

CEDAR PURE
0849



230 x 1500



242 x 1461

CEDAR BROWN
0850

NORTHWOOD



NORTHWOOD MACCHIATO
0816



184 x 1219



NORTHWOOD MOKACCINO
0817



184 x 1219

ROYAL OAK



ROYAL OAK BLOND
0812



184 x 1219



ROYAL OAK COFFEE
0740



184 x 1219

CAMBRIDGE



184 x 1219



214 x 1239

CAMBRIDGE
0465



BALLERINA



184 x 1219
152 x 762



214 x 1239



229 x 1220

BALLERINA
0347



QUARTET



184 x 1219
152 x 762



214 x 1239

QUARTET
0503



184 x 1219



214 x 1239

QUARTET FAUVE
0859



184 x 1219

QUARTET HONEY
0870



AMARANTE



184 x 1219



214 x 1239

AMARANTE
0579



RUSTIC OAK



184 x 1219



214 x 1239

RUSTIC OAK
0445



STRIPE OAK



184 x 1219



214 x 1239

STRIPE OAK HONEY
0857



184 x 1219



214 x 1239

STRIPE OAK ICE
0858

MICHIGAN



184 x 1219



214 x 1239

MICHIGAN
0461



BROWNIE



184 x 1219



214 x 1239

BROWNIE
0459



BUFFALO



184 x 1219

214 x 1239

BUFFALO
0457



ASPEN



184 x 1219



214 x 1239

ASPEN
0458



RUST



457 x 914



391 x 729

RUST CORTEN
0095



457 x 914

RUST METAL
0094

DURANGO TAUPE



610 x 610

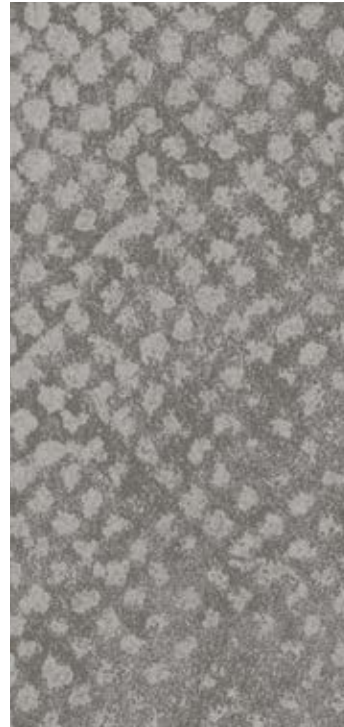


391 x 729

DURANGO TAUPE
0751



STACCATO



610 x 610



391 x 729

STACCATO
0476



SILVER CITY



610 x 610



391 x 729

SILVER CITY
0373



PARKER STATION



610 x 610



391 x 729



500 x 500

PARKER STATION
0374



NORVEGIAN STONE



457 x 914



391 x 729



500 x 500

NORVEGIAN STONE
0860



REGGIA



REGGIA TAUPE
0862



457 x 914



REGGIA TAUPE



REGGIA IVORY
0861



457 x 914



391 x 729

Format / mm

CARMEL



457 x 914



391 x 729

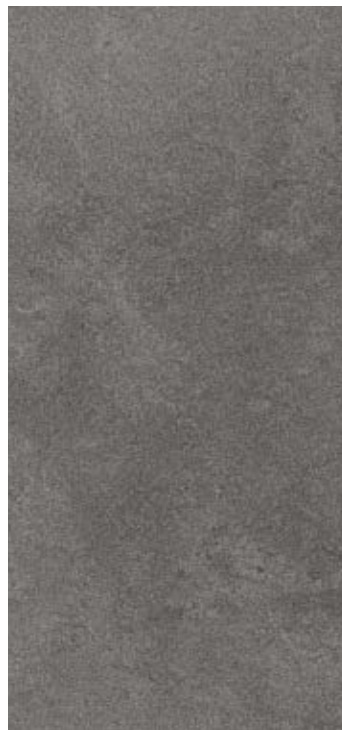


500 x 500

CARMEL
0618



RIVERSIDE



610 x 610



391 x 729

RIVERSIDE
0436



PONTO CRUZ



PONTO CRUZ NAVY
0876



610 x 610
152 x 762



500 x 500



PONTO CRUZ CITY
0878



610 x 610
152 x 762



500 x 500

BLOOM



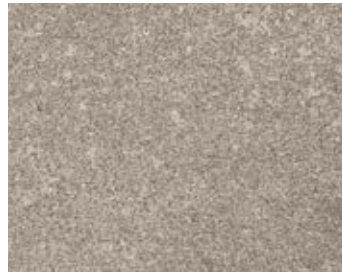
BLOOM TAUPE
0866



610 x 610



391 x 729



BLOOM UNI TAUPE
0868



610 x 610



391 x 729



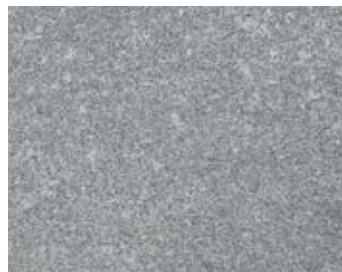
BLOOM GREY
0867



610 x 610



391 x 729



BLOOM UNI GREY
0869



610 x 610



391 x 729

CARRARE



457 x 914



391 x 729

CARRARE
0744



ERAMOSA BEIGE



457 x 914



391 x 729

ERAMOSA BEIGE
0863



MORE THAN A FLOOR... FLOOR, WALL & FINISHES
PLUS QU'UN SOL... SOLUTIONS COMPLÈTES, SOLS, MURS & FINITIONS
MEHR ALS NUR BELAG... BODEN, WAND & ZUBEHÖR



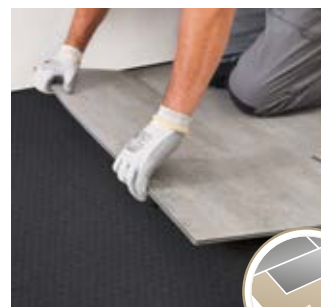


MATTING /
 TAPIS D'ENTRÉE /
 SAUBERLAUF

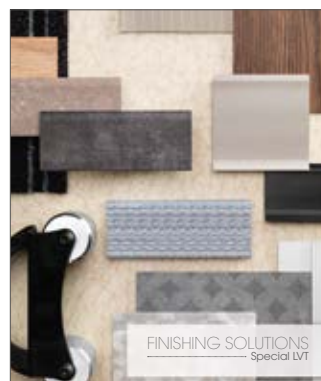
**TOOLS / OUTILS /
WERKZEUGE**



**ADD-ON UNDERLAYERS /
SOUS COUCHES
COMPLEMENTAIRES /
UNTERLAGEN**



FOR MORE DETAILS /
 PLUS DE DÉTAILS /
 WEITERE
 INFORMATIONEN
GERFLOR.COM



FINISHING SOLUTIONS
Special LVT

Gerflor
theflooringgroup



DESCRIPTION / BESCHREIBUNG / BESCHRIJVING / DESCRIPTION / DESCRIPCIÓN / DESCRICÃO / DESCRIZIONE

Total Thickness / Gesamtdicke / Totale dikte / Épaisseur totale / Espesor total / Spessore totale	EN ISO 24346	mm	2.50	2.50	4.50	5.00
	ASTM F386-02	inch	0.10	0.10	0.18	0.20
Thickness of the wearlayer / Dicke der Nutzschrift / Dikte van de slijtlaag / Épaisseur couche d'usure / Espesor capa de uso / Spessore camada de desgaste / Spessore strato di usura	EN ISO 24340	mm	0.55	0.55	0.55	0.55
	ASTM F410-02	inch	0.02	0.02	0.02	0.02
Weight / Flächengewicht / Gewicht / Poids / Peso / Peso / Peso	EN ISO 23997	g/m ²	4410	3850	7500	8230
Size / Format / Afmetingen / Format / Dimensiones / Dimensões / Dimensione	ISO 24342	mm	184x1219 / 230x1500 152x762 457x914 / 610x610	184x1219 / 230x1500 152x762 457x914 / 610x610	229x1220 500x500	214x1239 / 242x1461 391x729
	ASTM F 536	inch	7.25"x48" / 9"x59" 6"x30" / 18"x36" / 24"x24"	7.25"x48" / 9"x59" 6"x30" / 18"x36" / 24"x24"	9"x48" 19.7"x19.7"	8.4"x48.7" / 9.5"x57.5" 15.3"x28.7"

CLASSIFICATION / KLASSIFIKATION / CLASSIFICATIE / CLASSIFICATION / CLASIFICACIONES / CLASSIFICAÇÕES / CLASSIFICAZIONI

Norm/Product Specification / Produktnorm / Technische eigenschappen / Norme/Spécification produit / Normas / Normas / Norma prodotto	-	-	EN ISO 10582	EN ISO 10582	EN ISO 10582	EN ISO 10582
	ASTM F 1700-04	-	Class III Type B	Class III Type B	-	Class III Type B
European Classification / Europäische Klassifizierung / Europese classificatie / Classement européen / Classificación europea / Classificação Europeia / Europea	EN ISO 10874 (685)	Class	33 - 42	33 - 42	33 - 42	33 - 42
Classement UPEC	-	-	U3P3E2C2	U3P3E2C2	-	Pour pose dans les locaux classés U3P3E1/2C2
Certification	QB 30	n°	783/356-004.1	355-002.1	-	-
Fire Rating / Brandverhalten / Brand classificatie / Classement Feu / Fuego / Fogo / Reazione al fuoco	EN 13 501-1	Class	Bfl-s1	Bfl-s1	Bfl-s1	Bfl-s1
Static Electrical Propensity / Begehaufladung / Elektrische eigenschappen / Potentiel de charge / Comportamento electrostático / Comportamento electrostático / Resistenza elettrica	EN 1815	kV	< 2	< 2	< 2	< 2
Slip Resistance Wet / Rutschhemmung / Anti-slip / Glissance humide / Deslizamiento húmedo / Escorregamento húmido / Scivolosità umida ⁽¹⁾	DIN 51130/BGR 181	Class	R10	R10	R10	R10

PERFORMANCES / TECHNISCHE EIGENSCHAFTEN / TESTRESULTAAT / PERFORMANCE / CUALIDADES TÉCNICAS / PERFORMANCES / CARATTERISTICHE TECNICHE

Wear Resistance / Verschleißverhalten / Slijtvastheid / Résistance à l'usure / Abrasión / Abrasão / Resistenza all'abrasione	EN 660.2	mm ³	≤ 2.0	≤ 2.0	≤ 2.0	≤ 2.0
Wear Group / Verschleißgruppe / Groep slijtvastheid / Groupe d'abrasion / Grupo de abrasion / Grupo de abrasão / Gruppo di abrasione	QB 30	group	T	T	T	T
Type Binder content / Bindemittelgehalt / Teneur en agent liant / Contenido en ligante / Conteúdo em ligante	ISO 10582	group	I	I	I	I
Dimensional stability (norm) / Maßstabilität (norm) / Maatvastheid (norm) / Stabilité dimensionnelle (norme) / Estabilidad Dimensional (Exigencia) / Estabilidade dimensional (normalização) / Stabilità dimensionale (requisito normativo)	EN ISO 23999	%	≤ 0.25	≤ 0.25	≤ 0.15	≤ 0.15
Dimensional stability (average measured value) / Maßstabilität (Durchschnittswert) / Stabilité dimensionnelle (valeur moyenne mesurée) / Maatvastheid (gemeten gemiddelde waarde) / Estabilidad Dimensional (Valor medido) / Estabilidade Dimensional (Valor medio) / Stabilità dimensionale (rilevata)	-	%	≤ 0.10	≤ 0.10	≤ 0.05	≤ 0.05
Residual Indentation / Resteindruck / Indrukbelasting / Poinçonnement statique rémanent / Punzonamiento / Puncionamento / Impronta	EN ISO 24343-1	mm	≤ 0.10	≤ 0.10	≤ 0.10	≤ 0.10
Impact sound insulation / Trittschallverbesserungsmaß / Geluidsisolatie / Isolation acoustique bruits de chocs / Acústica / Isolamento acústico	EN ISO 717-2	dB	4	4	7	4
Room Impact / Raumschall / Looppgeluid / Sonorité à la marche / Rumore al calpestio / Sonoridad en la pisada / Sonoridade ao andar	NF S 31074	dB	77	77	73	78
Castor chair test / Stuhlrollenbeanspruchung / Rolweerstand bureaustoelen / Essai de la chaise à roulettes / Determinación del efecto de una silla con ruedas / Resistência a cadeiras de rodas / Resistenza al passaggio di sed (Type W)	ISO 4918	-	OK	OK	OK	OK
Thermal Conductivity / Wärmeleitfähigkeit / Thermische weerstand / Conductivité thermique / Conductividad térmica / Contutividade térmica / Resistenza termica / Värmeledningsmotstånd / Varmemotstånd	EN ISO 10456	W/(m.K)	0.25	0.25	0.25	0.25
Colour Fastness / Lichtechtheit / Lichtechtheit / Solidité lumière / Resistencia a la luz / Estabilidade das cores / Solidità alla luce	EN 20 105 - B02	degree	≥ 6	≥ 6	≥ 6	≥ 6
Surface Treatment / Oberflächenvergütung / Oppervlaktebehandling / Traitement de surface / Tratamiento de superficie / Tratamento de superficie / Trattamento di superficie	-	-	PUR+ Matt	PUR+ Matt	PUR+ Matt	PUR+ Matt
Chemical Products Resistance / Verhalten gegenüber Chemikalien / Químicos / Resistencia a los productos químicos / Resistência aos produtos químicos / Resistenza ai prodotti chimici ⁽²⁾	EN ISO 26987	-	OK	OK	OK	OK

ENVIRONMENT/INDOOR AIR QUALITY / UMWELT/RAUMLUFTQUALITÄT / ENVIRONNEMENT/QUALITE DE L'AIR INTERIEUR / MEDIO AMBIENTE/CALIDAD INTERIOR DEL AIRE INTERIOR / MEIO AMBIENTE/QUALIDADE DO AR INTERIOR

TVOC after 28 days / TVOC (28 Tage) / TVOC (28 dagen) / TVOC après 28 jours / TVOC (28 dias) / TVOC (28 dias) / TVOC (28 giorni) / TVOC (28 dagar) / TVOC (28 dager)	ISO 16000-6	µg/m ³	< 10	< 10	< 10	< 10
Certification / Zeugnis / Certification / Certificado / Certificação	-	-	-	Floorscore®	-	Floorscore®

CE MARKING / CE KENNZEICHNUNG / EG_CONFORMITEITSMERK / MARQUAGE CE / MARCA DE CONFORMIDAD CE / MARCA DE CONFORMIDADE CE / MARCATURA CE DI CONFORMITA

	EN 14041	-				
--	----------	---	--	--	--	--

(1) Ramp test with oil / Schiefe Ebene / Plan incliné avec huile

(2) Beständig gegenüber nicht färbenden alkoholhaltigen Handdesinfektionsmitteln, Haushaltschemikalien und verdünnten Säuren und Laugen bei kurzzeitiger Einwirkung.

CREATION, NO FORMALDEHYDE, BETTER INDOOR AIR QUALITY

COMPOSITION 100% REACH Phthalate Free <small>(except recycled content)</small>	INDOOR AIR QUALITY TVOC below detection level No Formaldehyde emission	RECYCLED CONTENT Glue Down: 35% Looselay: 35% Clic: 55%	RECYCLABILITY 100%	INSTALLATION Clic: Adhesive free	LCA Clic: Lowest Carbon Footprint CO ₂ emissions/sqm 10 times lower than standard process	WELLNESS Walking noise reduction: -10dB vs laminate

INTERIOR DESIGNER



interiordesigner.gerflor.com

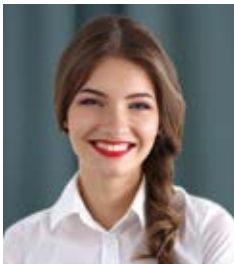


30 years experience
Since 1985

Manufacturer
3 LVT Factories

World Class Logistics
12 Logistics Hubs

Gerflor Design Centre
Exclusive Designs



“Serenity,,
Julia - **End User**



“Time saving,,
Mika - **Installer**



“Design,,
Pierre - **Architect**



“Confidence,,
Claire - **Store Manager**



“Reliability,,
Lucas - **Distributor**

Gerflor is our **Reference**