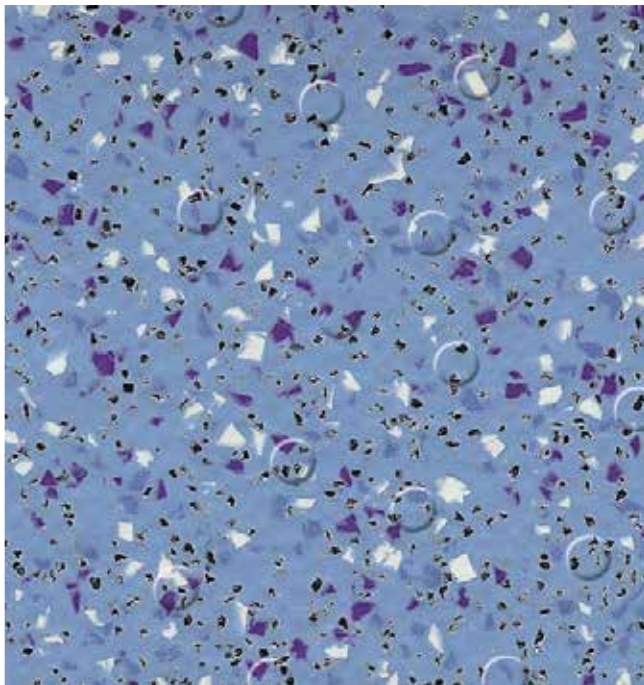


# TARASAFE ULTRA H<sub>2</sub>O

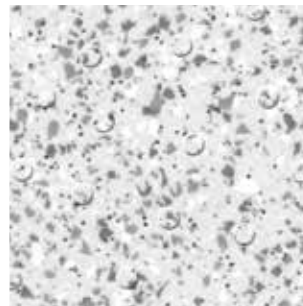


**UK High performance slip resistant safety flooring** for wet and dry, barefoot and shod applications.

**ES Pavimento de seguridad antideslizante de altas prestaciones** para aplicación en zonas secas y húmedas, para pie descalzo y calzado.

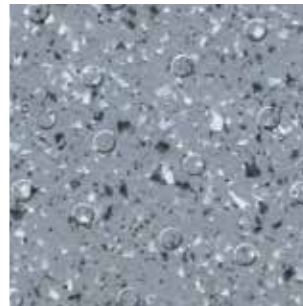


**7413 Ocean Blue**  
NCS: 3030-R90B / LRV: 31.8

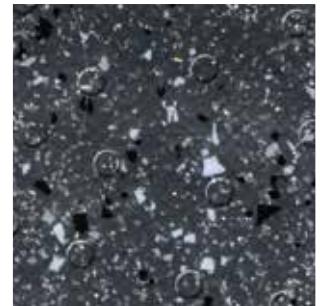


**7720 Iceberg**  
NCS: 1002-B / LRV: 60.6

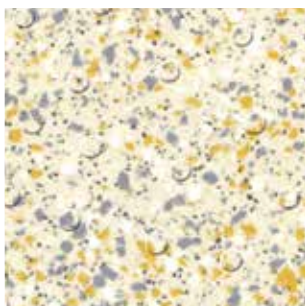
- Suitable for both barefoot and shod use
- Para pie descalzo y calzado



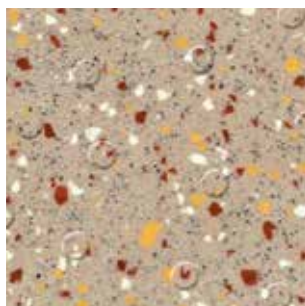
**7746 Stone**  
NCS: 5502-B / LRV: 23.6



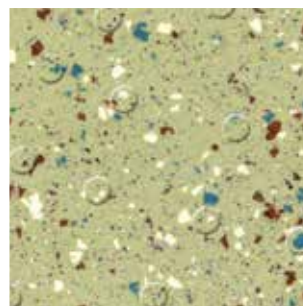
**7732 Gravel**  
NCS: 7502-B / LRV: 9.7



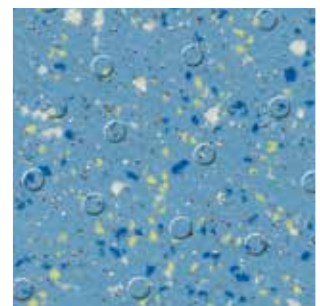
**7325 Seashore**  
NCS: 1005-Y20R / LRV: 63.0



**7314 Sand**  
NCS: 3010-Y10R / LRV: 41.2

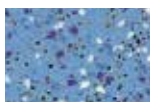


**7513 Seagrass**  
NCS: 3030-G60Y / LRV: 36.2



**7418 Marine**  
NCS: 4020-R90B / LRV: 22.8

THIS RANGE COMPLEMENTS THE **TARASAFE™ ULTRA COLLECTION** / ESTA GAMA COMPLEMENTA LA **COLECCIÓN TARASAFE ULTRA**



7482 Halite



8701 Opal



8709 Granite



8717 Obsidian



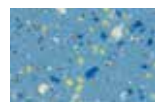
7383 Diopside



7384 Citrine



4505 Peridot



4465 Cobalt

**ASK FOR THE TARASAFE ULTRA SAMPLE CARD!**  
**SE PUEDE PEDIR EL CATÁLOGO TARASAFE ULTRA!**

NCS: Natural Colour System  
LRV: Light Reflectance Value

**Gerflor**  
theflooringroup

# TARASAFE ULTRA H<sub>2</sub>O

gerflor.com



**Tarasafe™ Ultra H<sub>2</sub>O** is an enhanced slip resistant safety vinyl floor covering with a raised emboss designed for applications where there are continuous wet areas.

**Tarasafe™ Ultra H<sub>2</sub>O** es un pavimento de seguridad antideslizante de altas prestaciones con superficie en relieve diseñado para aplicaciones en aquellos lugares con superficies continuamente húmedas.



High level of wet and dry slip resistance.  
Clase 3 de Resbaladidad según CTE (DB-SUA).



It provides exceptional barefoot comfort and is an ideal solution for shower and changing rooms and any high level risk wet areas where heavy duty safety flooring is required.

Ofrece un confort excepcional al pie descalzo y es una solución ideal para duchas y vestuarios, así como otras zonas con alto riesgo de deslizamiento donde además se necesita un pavimento con alta resistencia al tráfico.



A popular choice in the education, healthcare, leisure, hospitality, housing markets and any applications where slip resistance needs to be maintained.

La elección ideal en educación, salud, ocio y deporte, residencial público y privado y cualquier otra aplicación donde la resistencia al deslizamiento sea una prioridad.

## Tarasafe Ultra H<sub>2</sub>O

### DESCRIPTION / DESCRIPCIÓN

|  |                       |        |        |
|--|-----------------------|--------|--------|
| Total thickness on grain side / <i>Espesor total</i> | EN ISO 24346 (EN 428) | mm     | 2.0    |
| Wear layer thickness / <i>Espesor capa de uso</i>    | EN ISO 24340 (EN 429) | mm     | 1.00   |
| Weight / <i>Peso</i>                                 | EN ISO 23997 (EN 430) | g/sq.m | 2400   |
| Width/Length of Sheet / <i>Ancho/Largo de rollos</i> | EN ISO 24341 (EN 426) | cm/lm  | 200/20 |

### CLASSIFICATION / CLASIFICACIONES

|   |                       |              |                       |
|---|-----------------------|--------------|-----------------------|
| Norm/Product Specification / <i>Normas</i>                                | -                     | -            | EN ISO 10582 (EN 649) |
| European classification / <i>Clasificación Europea</i>                    | EN ISO 10874 (EN 685) | class /clase | 34-43                 |
| Fire Rating / <i>Fuego</i>  | EN 13501-1            | class /clase | Cfl-s1                |
| Static electrical propensity / <i>Comportamiento electrostático</i>       | EN 1815               | kV           | <2                    |
| Slip resistance - Pendulum Test (dry & wet) / <i>Deslizamiento húmedo</i> | BS 7976-2             | PTV          | > 36                  |
| Surface roughness   | -                     | µm           | Rz > 20               |
| Slip resistance wet - test with oil / <i>Deslizamiento húmedo</i>         | DIN 51130             | class /clase | R11                   |
| Slip resistance wet - bare foot / <i>Deslizamiento húmedo</i>             | DIN 51097             | class /clase | C                     |
| Slip resistance - ramp test / <i>Deslizamiento húmedo</i>                 | EN 13845 (annex C)    | class /clase | ESb                   |
| Slip resistance wet - areas / <i>Deslizamiento húmedo</i>                 | CTE                   | class /clase | 3                     |

### PERFORMANCES / CUALIDADES TÉCNICAS

|   |                         |                 |  |
|---|-------------------------|-----------------|--|
| Wear Resistance / <i>Abrasión</i>   | EN 660.2                | mm <sup>3</sup> | ≤4   |
| Wear Group / <i>Grupo de abrasión</i>   | NF 189                  | group           | P  |
| Type binder content / <i>Tipo carga mineral</i>   | EN ISO 10582            | Type / tipo     | I  |
| Dimensional stability / <i>Estabilidad dimensional</i>  | EN ISO 23999 (EN 434)   | %               | ≤ 0.40   |
| Residual indentation: exigency / <i>Punzonamiento</i>   | EN ISO 24343-1 (EN 433) | mm              | ≤ 0.10   |
| Castor Chair test (type W) / <i>Determinación del efecto de una silla con ruedas (Tipo W)</i> | ISO 4918 (EN 425)       | -               | OK   |
| Thermal Conductivity / <i>Conductividad térmica</i>   | EN ISO 10456 (EN 12524) | W/(m.K)         | 0.25   |
| Colour Fastness / <i>Resistencia a la luz</i>   | EN 20 105-B02           | degree / grado  | ≥6   |
| Chemical Products Resistance / <i>Resistencia a los productos químicos</i>                    | EN ISO 26987 (EN 423)   | -               | OK   |
| Anti-bacterial activity (MRSA) / <i>Actividad antibacteriana (MRSA)<sup>(1)</sup></i>         | ISO 22196               | -               | > 99% inhibits growth /<br>inhibe el crecimiento |

### ENVIRONMENT/INDOOR AIR QUALITY / MEDIO AMBIENTE/CALIDAD AIRE INTERIOR

|  |             |                   |             |
|--|-------------|-------------------|-------------|
| TVOC after 28 days / <i>TVOC (28 días)</i> | ISO 16000-6 | µg/m <sup>3</sup> | <100        |
| Certification / <i>Certificado</i>         | -           | -                 | Floorscore® |

### CE MARKING / MARCA DE CONFORMIDAD CE

|    |           |   |  |
|----|-----------|---|--|
| CE | EN 14 041 | - |  |
|----|-----------|---|--|

(1) The implementation of an effective cleaning regime is the most important defence against infection.  
La implementación de un efectivo régimen de limpieza es la defensa más importante contra la infección.



Installation and Maintenance Guidelines, Complementary ranges available on our Gerflor website.

**IMPORTANT:** The information contained in this document is valid from 01/04/2018 and is subject to change at any time without notice. In the context of constantly changing technology, our customers are responsible, prior to any use, for checking with us that this document is the version in force.

Rubber leaves indelible stains on vinyl floorings: do not use mats with rubber backing and replace tubular furniture feet with those made of PVC or polyamide. Place mats of sufficient length at entrances to reduce outside sources of dirt.

## TARASAFE ULTRA H<sub>2</sub>O. LESS SPEAKING FOR MORE ACTIONS

|  |  |                                      |  |  |
|--|--|--------------------------------------|--|--|
| <p><b>COMPOSITION</b><br/>100% REACH</p> | <p><b>INDOOR AIR QUALITY</b><br/>10 times lower than norms requirements (TVOC &lt;100µg/m<sup>3</sup> after 28 days)</p> | <p><b>RECYCLABILITY</b><br/>100%</p> | <p><b>LCA</b><br/>Eco-designed according to a product specific life cycle analysis</p> | <p><b>WELLNESS</b><br/>Anti slip R10</p> |
|--|--|--------------------------------------|--|--|

**Gerflor**  
theflooringgroup