



“my
Reference,”

CREATION 30

Gerflor[®]
the flooring group

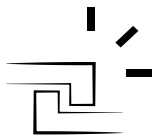
30 | CREATION BOOK

CREATION 30 GLUE DOWN



PERMANENT ADHESIVE
COLLAGE PERMANENT
VOLLFLÄCHIGE
VERKLEBUNG

CREATION 30 CLIC



INTERLOCKING
CLIPSABLE
KLICKSYSTEM



PATENTED

5X MORE RESISTANT 30% FASTER

DESIGN SHADE VARIATION / NIVEAU DE CONTRASTE DU DÉCOR / KONTRASTSTÄRKE DES DESIGNS



LIGHT / LÉGER / GERING



MEDIUM / MOYEN / MITTEL



HIGH / FORT / HOCH

COLOR DESIGN	CODE	CREATION 30	CREATION 30 CLIC	SKIRTINGS / PLINTHES / SOCKELLEISTEN (MATCHING DESIGNS)	PAGE
AMADOR	0447	■	■	S004	10
AMARANTE	0579	■	■	S005	17
ARENA	0060	■	■	S026	06
ASPEN	0458	■	■	S006	28
BALLERINA	0347	■	■	S008	23
BOSTONIAN OAK	0871	■	■	S016	04
BOSTONIAN OAK BEIGE	0853	■	■	S017	04
BOSTONIAN OAK GREY	0855	■	■	S018	04
BOSTONIAN OAK HONEY	0851	■	■	S019	04
BROWNIE	0459	■	■	S073	26
BUFFALO	0457	■	■	S075	27
CAMBRIDGE	0465	■	■	S065	21
CARMEL	0618	■	■	S020	38
CARRARE	0744	■	■	S021	39
CEDAR BROWN	0850	■	■	S024	18
CEDAR PURE	0849	■	■	S025	18
CEMENTINE BUCKSKIN	0865	■	■	S023	36
CEMENTINE DENIM	0864	■	■	S022	36
DURANGO TAUPE	0751	■	■	S027	40
HONEY OAK	0441	■	■	S033	40
LONG BOARD	0455	■	■	S034	15
MALUA BAY	0448	■	■	S035	05
MICHIGAN	0461	■	■	S038	25
NORVEGIAN STONE	0860	■	■	S042	33
OXFORD	0061	■	■	S043	11
PARKER STATION	0374	■	■	S047	32
QUARTET	0503	■	■	S056	22
QUARTET FAUVE	0859	■	■	S057	22
RANCH	0456	■	■	S053	09
REGGIA IVORY	0861	■	■	S054	37
RIVERSIDE	0436	■	■	S032	30
RUSTIC OAK	0445	■	■	S062	24
SILVER CITY	0373	■	■	S048	31
STACCATO	0476	■	■	S064	34
SWISS OAK BEIGE	0848	■	■	S011	03
SWISS OAK CASHMERE	0795	■	■	S012	03
SWISS OAK GOLDEN	0796	■	■	S015	03
SWISS OAK PEARL	0846	■	■	S014	03
SWISS OAK SMOKED	0847	■	■	S013	03
TWIST	0504	■	■	S039	14
WHITE LIME	0584	■	■	S074	07
ALAMO ASH	0737	■	■	S002	08
ALAMO SAND	0738	■	■	S003	08
BACK STREET	0748	■	■	S007	35
CHEVRON BUCKWHEAT	0811	■	■	S029	12
CHEVRON HURRICANE	0809	■	■	S030	12
NORTHWOOD MACCHIATO	0816	■	■	S040	19
NORTHWOOD MOKACCINO	0817	■	■	S041	19
PASHMINA CLOUD	0747	■	■	S049	29
PASHMINA STORM	0746	■	■	S050	29
QUARTET HONEY	0870	■	■	S058	22
REGGIA TAUPE	0862	■	■	S055	37
ROYAL OAK BLOND	0812	■	■	S060	20
ROYAL OAK COFFEE	0740	■	■	S061	20
ROYAL OAK GOLD	0739	■	■	S059	20
TIMBER CAMEL	0742	■	■	S066	13
TIMBER GOLD	0874	■	■	S067	13
TIMBER RUST	0741	■	■	S068	13

■ : Available / Disponible / Verfügbar

LRV/LVR on gerflor.com

SWISS OAK



SWISS OAK GOLDEN



184 x 1219
230 x 1500



214 x 1239
242 x 1461

SWISS OAK GOLDEN
0796



184 x 1219
230 x 1500



214 x 1239
242 x 1461

SWISS OAK BEIGE
0848



184 x 1219
230 x 1500



214 x 1239
242 x 1461

SWISS OAK CASHMERE
0795



184 x 1219
230 x 1500



214 x 1239
242 x 1461

SWISS OAK PEARL
0846



184 x 1219
230 x 1500



214 x 1239
242 x 1461

SWISS OAK SMOKED
0847

BOSTONIAN OAK



184 x 1219
230 x 1500



214 x 1239
242 x 1461

BOSTONIAN OAK HONEY
0851

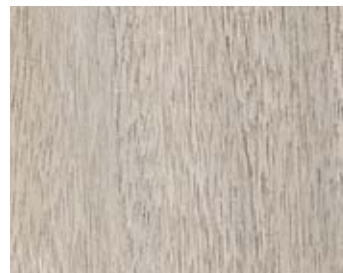


184 x 1219



214 x 1239

BOSTONIAN OAK
0871



184 x 1219
230 x 1500



214 x 1239
242 x 1461

BOSTONIAN OAK BEIGE
0853



184 x 1219
230 x 1500



214 x 1239
242 x 1461

BOSTONIAN OAK GREY
0855

MALUA BAY



184 x 1219



214 x 1239

MALUA BAY
0448



ARENA



184 x 1219



214 x 1239

ARENA
0060



WHITE LIME



184 x 1219



214 x 1239

WHITE LIME
0584



ALAMO



ALAMO ASH
0737



184 x 1219



ALAMO SAND
0738



184 x 1219

RANCH



184 x 1219
230 x 1500



214 x 1239
242 x 1461

RANCH
0456



AMADOR



184 x 1219



214 x 1239

AMADOR
0447



OXFORD



184 x 1219



214 x 1239

OXFORD
0061



CHEVRON



CHEVRON BUCKWHEAT
0811



184 x 1219



CHEVRON HURRICANE
0809



184 x 1219

TIMBER



184 x 1219

TIMBER CAMEL
0742



184 x 1219

TIMBER GOLD
0874



184 x 1219

TIMBER RUST
0741



TIMBER RUST

Format / mm

TWIST



184 x 1219



214 x 1239

TWIST
0504



LONGBOARD



184 x 1219



214 x 1239

LONGBOARD
0455



HONEY OAK



184 x 1219



214 x 1239

HONEY OAK
0441



AMARANTE



184 x 1219



214 x 1239

AMARANTE
0579



CEDAR



230 x 1500



242 x 1461

CEDAR PURE
0849



230 x 1500



242 x 1461

CEDAR BROWN
0850

CARRARE

NORTHWOOD



NORTHWOOD MOKACCINO



NORTHWOOD MACCHIATO
0816



184 x 1219



NORTHWOOD MOKACCINO
0817



184 x 1219

ROYAL OAK



ROYAL OAK BLOND
0812



184 x 1219



ROYAL OAK COFFEE
0740



184 x 1219



ROYAL OAK GOLD
0739



184 x 1219

CAMBRIDGE



184 x 1219



214 x 1239

CAMBRIDGE
0465



QUARTET



184 x 1219



214 x 1239

QUARTET
0503



184 x 1219



214 x 1239

QUARTET FAUVE
0859



184 x 1219

QUARTET HONEY
0870



BALLERINA



184 x 1219



214 x 1239

BALLERINA
0347



RUSTIC OAK



184 x 1219



214 x 1239

RUSTIC OAK
0445



MICHIGAN



184 x 1219



214 x 1239

MICHIGAN
0461



BROWNIE



184 x 1219



214 x 1239

BROWNIE
0459



BUFFALO



184 x 1219



214 x 1239

BUFFALO
0457



ASPEN



184 x 1219



214 x 1239

ASPEN
0458



PASHMINA



457 x 914

PASHMINA CLOUD
0747



457 x 914

PASHMINA STORM
0746

RIVERSIDE



610 x 610



391 x 729

RIVERSIDE
0436



SILVER CITY



610 x 610



391 x 729

SILVER CITY
0373



PARKER STATION



610 x 610



391 x 729

PARKER STATION
0374



NORVEGIAN STONE



457 x 914



391 x 729

NORVEGIAN STONE
0860



NORVEGIAN STONE

Format / mm

STACCATO



610 x 610



391 x 729

STACCATO
0476



BACK STREET



457 x 914

BACK STREET
0748



CEMENTINE



CEMENTINE BUCKSKIN
0865



457 x 914



391 x 729



CEMENTINE DENIM
0864



457 x 914

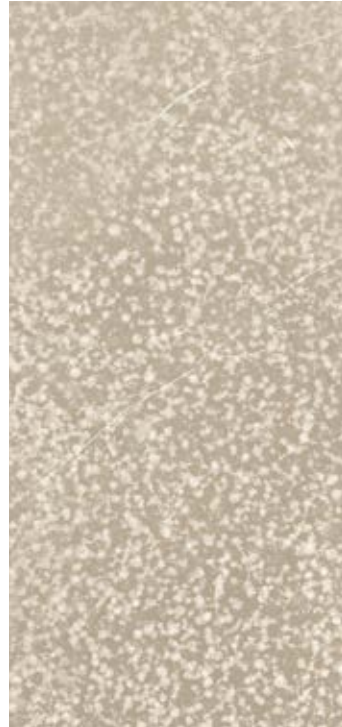


391 x 729

REGGIA



REGGIA IVORY



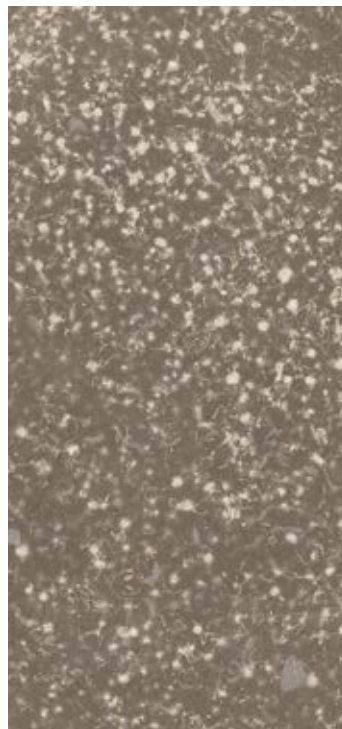
REGGIA IVORY
0861



457 x 914



391 x 729



REGGIA TAUPE
0862



457 x 914

CARMEL



457 x 914



391 x 729

CARMEL
0618



CARRARE



457 x 914



391 x 729

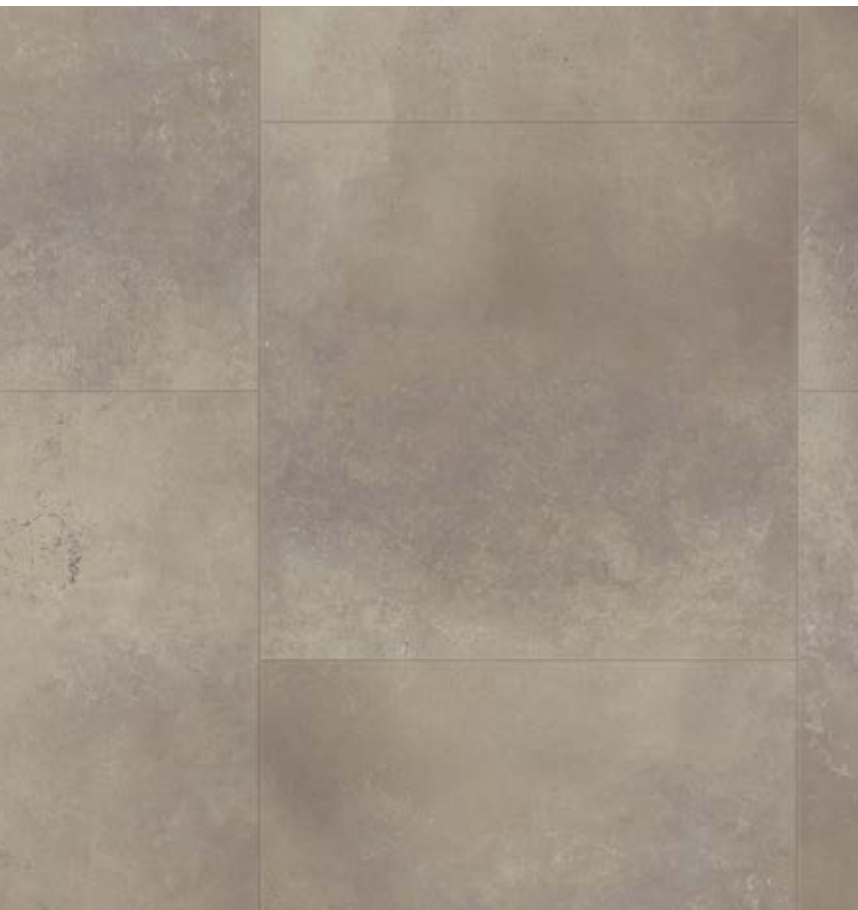
CARRARE
0744



CARRARE

Format / mm

DURANGO TAUPE



610 x 610



391 x 729

DURANGO TAUPE
0751




CREATION 30	CREATION 30 CLIC
Design	

DESCRIPTION / BESCHREIBUNG / BESCHRIJVING / DESCRIPTION / DESCRIPCIÓN / DESCRIÇÃO / DESCRIZIONE

Total Thickness / Gesamtdicke / Totale dikte / Épaisseur totale / Espesor total / Espessura total / Spessore totale	EN ISO 24346	mm	2.00	4.50
	ASTM F386-02	inch	0.08	0.18
Thickness of the wearlayer / Dicke der Nuttschicht / Dikte van de slijtlaag / Épaisseur couche d'usure / Espesor capa de uso / Espessura camada de desgaste / Spessore strato di usura	EN ISO 24340	mm	0.30	0.40
	ASTM F410-02	inch	0.01	0.02
Weight / Flächengewicht / Gewicht / Poids / Peso / Peso / Peso	EN ISO 23997	g/m ²	3460	7385
Size / Format / Afmetingen / Format / Dimensiones / Dimensões / Dimensioe	ISO 24342	mm	184x1219 / 230x1500 457x914 / 610x610	214x1239 / 242x1461 391x729
	ASTM F 536	inch	7.25"x48" / 9"x59" 18"x36" / 24"x24"	8.4"x48.7" / 9.5"x57.5" 15.3"x28.7"

CLASSIFICATION / KLASSIFIKATION / CLASSIFICATIE / CLASSIFICATION / CLASIFICACIONES / CLASSIFICAÇÕES / CLASSIFICAZIONI

Norm/Product Specification / Produktnorm / Technische eigenschappen / Norme/Spécification produit / Normas / Normas / Norma prodotto	-	-	EN ISO 10582	EN ISO 10582
	ASTM F 1700-04	-	Class III Type B	Class III Type B
European Classification / Europäische Klassifizierung / Europese classificatie / Classement européen / Clasificación europea / Classificação Europeia / Europea	EN ISO 10874	Class	23 - 31	32
Classement UPEC	-	-	UZSP3E2C2	-
Certification  UPEC	QB 30	n°	783/356-003.1	-
Fire Rating / Brandverhalten / Brand classificatie / Classement Feu / Fuego / Fogo / Reazione al fuoco	EN 13 501-1	Class	Bfl-s1	Bfl-s1
Static Electrical Propensity / Begehauladung / Elektrische eigenschappen / Potentiel de charge / Comportamiento electrostático / Comportamento electrostático / Resistenza elettrica	EN 1815	kV	< 2	< 2
Slip Resistance Wet / Rutschhemmung / Anti-slip / Glissance humide / Deslizamiento húmedo / Escorregamento húmido / Scivolosità umida ⁽¹⁾	DIN 51130/BGR 181	Class	R10	R10

PERFORMANCES / TECHNISCHE EIGENSCHAFTEN / TESTRESULTAAT / PERFORMANCE / CUALIDADES TÉCNICAS / PERFORMANCES / CARATTERISTICHE TECNICHE

Wear Resistance / Verschleißverhalten / Slijtvastheid / Résistance à l'usure / Abrasión / Abrasão / Resistenza all'abrasione	EN 660.2	mm ³	≤ 2.0	≤ 2.0
Wear Group / Verschleißgruppe / Groep slijtvastheid / Groupe d'abrasion / Grupo de abrasión / Grupo de abrasão / Gruppo di abrasione	QB 30	group	T	T
Type Binder content / Bindemittelgehalt / Teneur en agent liant / Contenido en ligante / Conteúdo em ligante	ISO 10582	group	I	I
Dimensional stability (norm) / Maßstabilität (norm) / Maatvastheid (norm) / Stabilité dimensionnelle (norme) / Estabilidad Dimensional (Exigencia) / Estabilidade dimensional (normalização) / Stabilità dimensionale (requisito normativo)	EN ISO 23999	%	≤ 0.25	≤ 0.15
Dimensional stability (average measured value) / Maßstabilität (Durchschnittswert) / Stabilité dimensionnelle (valeur moyenne mesurée) / Maatvastheid (gemeten gemiddelde waarde) / Estabilidad Dimensional (Valor medido) / Estabilidade Dimensional (Valor medio) / Stabilità dimensionale (rilevata)	-	%	≤ 0.10	≤ 0.05
Residual Indentation / Resteindruck / Indrukbelasting / Poinçonnement statique rémanent / Punzonamiento / Punçoamento / Impronta	EN ISO 24343-1	mm	≤ 0.10	≤ 0.10
Impact sound insulation / Trittschallverbesserungsmaß / Geluidsisolatie / Isolation acoustique bruits de chocs / Acústica / Isolamento acústico	EN ISO 717-2	dB	4	4
Room Impact / Raumschall / Loopgeluid / Sonorité à la marche / Rumore al calpestio / Sonoridad en la pisada / Sonoridade ao andar	NF S 31074	dB	77	78
Castor chair test / Stuhlrollenbeanspruchung / Rolweerstand bureaustoelen / Essai de la chaise à roulettes / Determinación del efecto de una silla con ruedas / Resistência a cadeiras de rodas / Resistenza al passaggio di sed (Type W)	ISO 4918	-	OK	OK
Thermal Conductivity / Wärmeleitfähigkeit / Thermische weerstand / Conductivité thermique / Conductividad térmica / Contutividade térmica / Resistenza termica / Värmeledningsmotstånd / Värmestånd	EN ISO 10456	W/(m.K)	0.25	0.25
Colour Fastness / Lichtechtheit / Lichtechtheid / Solidité lumière / Resistencia a la luz / Estabilidade das cores / Solidità alla luce	EN 20 105 - B02	degree	≥ 6	≥ 6
Surface Treatment / Oberflächenvergütung / Oppervlaktebehandling / Traitement de surface / Tratamiento de superficie / Tratamento de superficie	-	-	PUR+ Matt	PUR+ Matt
Chemical Products Resistance / Verhalten gegenüber Chemikalien / Chemische bestendigheid / Résistance aux produits chimiques / Resistencia a los productos químicos / Resistência aos produtos químicos / Resistenza ai prodotti chimici ⁽²⁾	EN ISO 26987	-	OK	OK

ENVIRONMENT/INDOOR AIR QUALITY / UMWELT/RAUMLUFTQUALITÄT / ENVIRONNEMENT/QUALITE DE L'AIR INTERIEUR / MEDIO AMBIENTE/CALIDAD INTERIOR DEL AIRE INTERIOR / MEIO AMBIENTE/QUALIDADE DO AR INTERIOR

TVOC after 28 days / TVOC (28 Tage) / TVOC (28 dagen) / TVOC après 28 jours / TVOC (28 dias) / TVOC (28 dias) / TVOC (28 giorni) / TVOC (28 dagar) / TVOC (28 dager)	ISO 16000-6	µg/m ³	< 10	< 10
Certification / Zeugnis / Certification / Certificado / Certificação	-	-	-	Floorscore®

CE MARKING / CE KENNZEICHNUNG / EG_CONFORMITEITSMERK / MARQUAGE CE / MARCA DE CONFORMIDAD CE / MARCA DE CONFORMIDADE CE / MARCATURA CE DI CONFORMITA

	EN 14041	-				
---	----------	---	---	---	---	---

(1) Ramp test with oil / Schiefe Ebene / Plan incliné avec huile

(2) Beständig gegenüber nicht färbenden alkoholhaltigen Handdesinfektionsmitteln, Haushaltschemikalien und verdünnten Säuren und Laugen bei kurzzeitiger Einwirkung.

CREATION, NO FORMALDEHYDE, BETTER INDOOR AIR QUALITY

 COMPOSITION 100% REACH Phthalate Free (except recycled content)	 INDOOR AIR QUALITY TVOC below detection level No Formaldehyde emission	 RECYCLED CONTENT Glue Down: 35% Clic: 55%	 RECYCLABILITY 100%	 INSTALLATION Clic: Adhesive free	 LCA Clic: Lowest Carbon Footprint CO ₂ emissions/sgm 10 times lower than standard process	 WELLNESS Walking noise reduction: -10dB vs laminate
--	--	---	---	--	---	---

MORE THAN A FLOOR... FLOOR, WALL & FINISHES
PLUS QU'UN SOL... SOLUTIONS COMPLÈTES, SOLS, MURS & FINITIONS
MEHR ALS NUR BELAG... BODEN, WAND & ZUBEHÖR



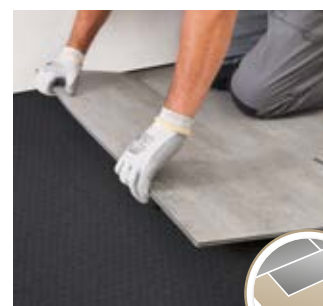


**MATTING /
TAPIS D'ENTRÉE /
SAUBERLAUF**

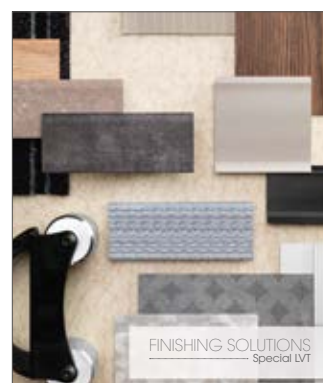
**TOOLS / Outils /
WERKZEUGE**



**ADD-ON UNDERLAYERS /
SOUS COUCHES
COMPLEMENTAIRES /
UNTERLAGEN**



**FOR MORE DETAILS /
PLUS DE DÉTAILS /
WEITERE
INFORMATIONEN
GERFLOR.COM**



FINISHING SOLUTIONS
Special LVT

Gerflor
theflooringgroup

INTERIOR DESIGNER



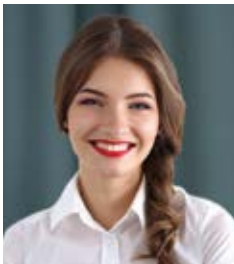
interiordesigner.gerflor.com

30 years experience
Since 1985

Manufacturer
3 LVT Factories

World Class Logistics
12 Logistics Hubs

Gerflor Design Centre
Exclusive Designs



“Serenity,,
Julia - **End User**



“Time saving,,
Mika - **Installer**



“Design,,
Pierre - **Architect**



“Confidence,,
Claire - **Store Manager**



“Reliability,,
Lucas - **Distributor**

Gerflor is our **Reference**