

Verve

Lano
Carpet Solutions



▲ SMB: LVEV.0250 | 400 & 500 cm



▲ SMB: LVEV.0230 | 400 & 500 cm



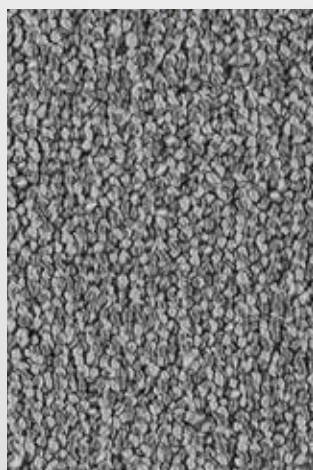
▲ SMB: LVEV.0830 | 400 & 500 cm



▲ SMB: LVEV.0420 | 400 & 500 cm



▲ SMB: LVEV.0860 | 400 & 500 cm



▲ SMB: LVEV.0850 | 400 & 500 cm



▲ SMB: LVEV.0821 | 400 & 500 cm



▲ SMB: LVEV.0810 | 400 & 500 cm



▲ SMB: LVEV.0370 | 400 & 500 cm



▲ SMB: LVEV.0770 | 400 & 500 cm



Secondary Backing Rugtype • Envers Rücken • Sottofondo	SMB	EN 13501-1 Fire behaviour Brandgedrag • Comportement au feu Brennverhalten • Reazione al fuoco	E_{fl}
Manufacturing process Fabricagemethode • Technique de fabrication Herstellungsart • Tecnica di fabbricazione	tufted, 1/10" loop pile	EN 1307-2004 Classification Classificatie • Classification Klassifizierung • Classificazione	Class 22 Domestic General
Pile composition Pool Samenstelling • Nature du velours Polmaterial • Composizione felpa	PP	ISO 140/8 1997 Impact sound insulation Contactgeluidsisolatie • Isolation aux bruits d'impact Trittschallverbesserungsmaß • Miglioramento acustico	± 25 dB
Primary backing Tuftdoek • Premier dossier Trägermaterial • Tela di supporto	woven	DIN 52612 Thermal retention Warmteoorlaatweerstand • Résistivité thermique Wärmedurchlaßwiderstand • Resistenza termica	± 0,09 m²/kW
Width Breedte • Largeur Breite • Altezza	± 400 & 500 cm	TOG rating	± 0,9
Effective pile height Nuttige poolhoogte • Hauteur de velours utile Tatsächliche Florhöhe • Spessore felpa utile	± 5,5 mm	ISO 105 B02 2000 Lightfastness Lichtechtheid • Solidité à la lumière Lichtechtheid • Solidità colori alla luce	≥ 5
Total height Totale dikte • Hauteur totale Gesamthöhe • Spessore totale	± 8 mm	ISO 105 E01 2002 Waterfastness change in colour Waterechtheid verkleuring • Solidité à l'eau changement couleur Wasserechtheit Änderung der Farbe • Solidità colori all'acqua cambio colore	≥ 3-4
Number of knots/sqm Aantal noppen/m ² • Nombre de points/m ² Noppenzahl/m ² • Numero di punti/mq	± 157.600	ISO 105 E01 2002 Waterfastness staining Waterechtheid uitbloeding • Solidité à l'eau dégorgement Wasserechtheit anbluten • Solidità colori all'acqua sfumatura colore	≥ 2-3
Pile weight/sqm Poolinzetgewicht/m ² • Poids mis en oeuvre/m ² Poleinsatzgewicht/m ² • Peso felpa/mq	± 1.210 gr	ISO 105 X12 2001 Rubbingfastness dry Wrijftechtheid droog • Solidité au frottement sec Reibungechtheit trocken • Solidità colori allo sfregamento a secco	≥ 3-4
Total weight/sqm Totaal gewicht/m ² • Poids total/m ² Gesamtwicht/m ² • Peso totale/m ²	± 2.310 gr	ISO 105 X12 2001 Rubbingfastness wet Wrijftechtheid nat • Solidité au frottement humide Reibungechtheit nass • Solidità colori allo sfregamento umido	≥ 3

(±) These details are approximate. Complete specification details and associated certificates together with tolerances applying to the above can be provided upon request. We reserve the right to improve technical specifications without prior notice. Due to method of manufacture perfect pattern and/or colour matching cannot be guaranteed. In cut-pile carpeting, in rare cases, shading pile reversal may occur without affecting its fitness for use. Shading/pile reversal can not be considered as a manufacturing or a material defect and will not affect the durability of the carpet. For other languages see: www.lano.com

